



TabCreator 0.0.1



CompuGeek Software

This document provides instructions on how to use and install TabCreator.

Contents

Introduction.....	3
Requirements	4
Installation.....	5
Adding a Tab.....	6
Advanced.....	7
Removing a Tab.....	8
FAQs.....	9
Support.....	10

Introduction

TabCreator is a simple way to host your own applications inside its separate Windows Home Server Console Tab. TabCreator makes it easy to add frequently used applications to the Windows Home Server Console.

Example tabs created with TabCreator:

- DVD Shrink
- Notepad
- Task Manager

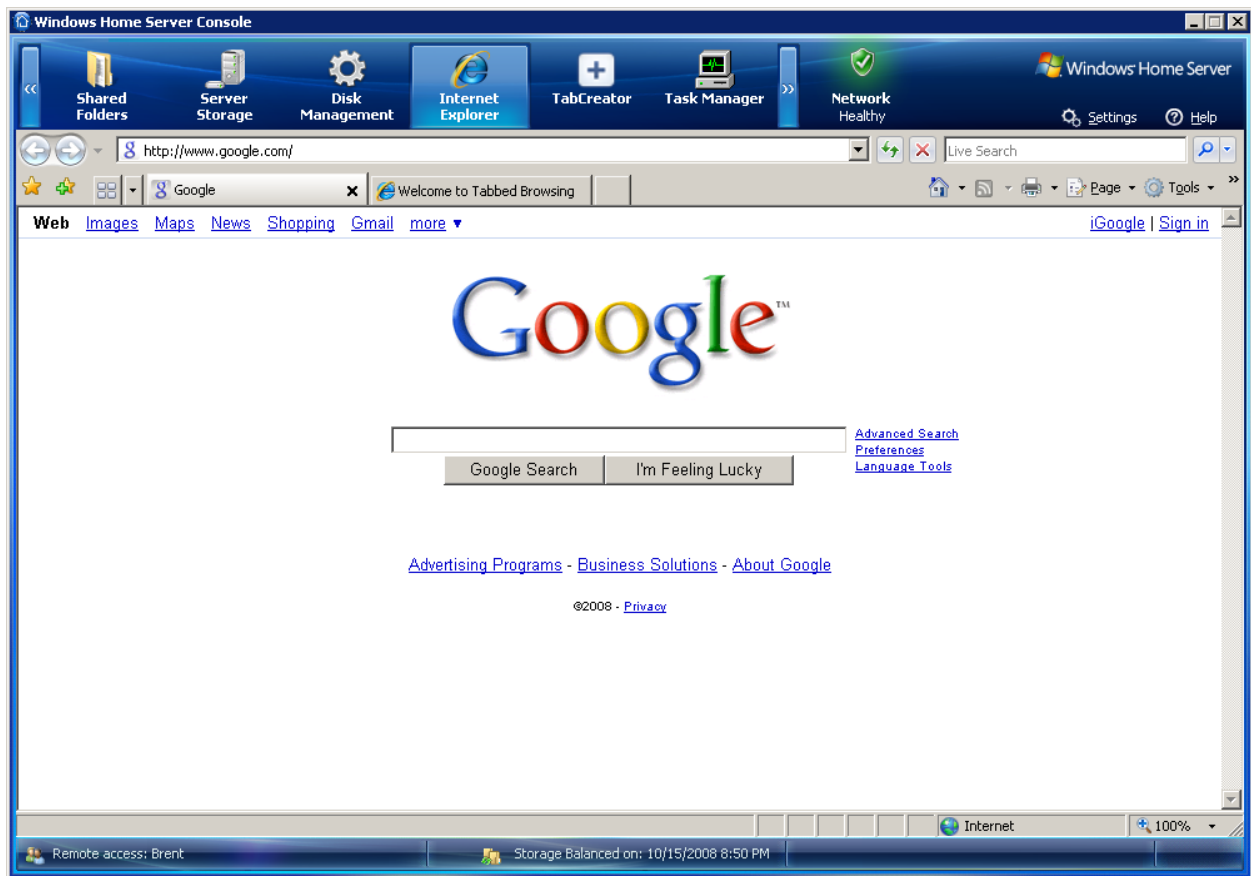


FIGURE 1

Requirements

- A Windows Home Server with or without Power Pack 1

Installation

The Windows Home Server Add-in installation is fairly easy and straight-forward. To install the Windows Home Server Add-in follow the below instructions:

- 1) Copy TabCreator.msi to [\\SERVER\Software\Add-Ins](#).
- 2) Open up the Windows Home Server Console.
- 3) Open the Settings dialog.
- 4) Switch to the Add-ins tab.
- 5) Click the Available tab.
- 6) Find TabCreator in the list of available add-ins.
- 7) Click the install button under TabCreator.
- 8) After it installs click OK.
- 9) Done.

Adding a Tab

TabCreator makes adding a tab easy. Simply choose the application to host, optionally any runtime parameters, and a tab title. If you need more options, TabCreator's got you covered under Advanced. For your changes to take effect, you need to reset the Windows Home Server Console. Close out the console window, and reopen it. Before logging in again, click the options menu below the password box, and choose 'Reset the Windows Home Server Console.'

After resetting the console, you may now log back into the console. You should now see your new tab!

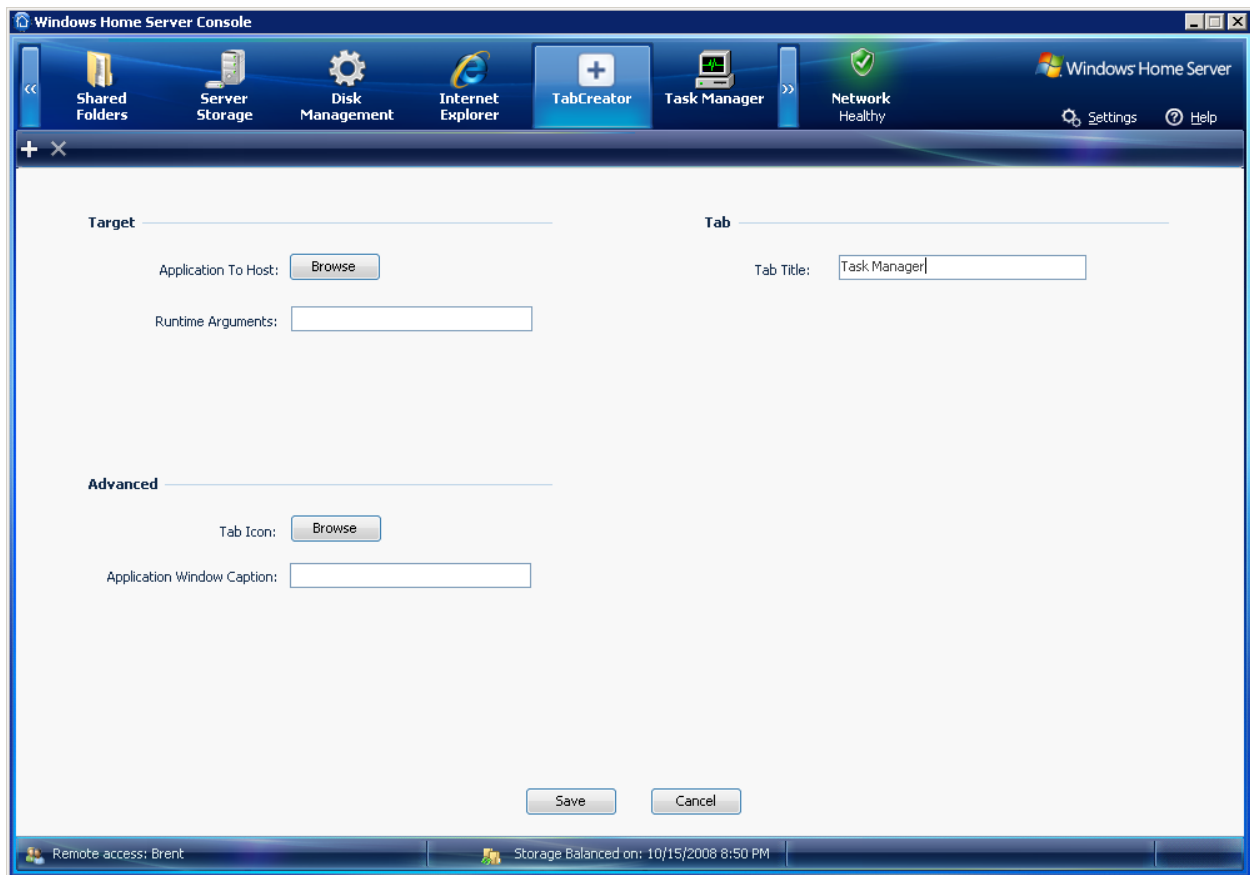


FIGURE 2

Advanced

Sometimes, you may have issues where TabCreator is not hosting the application. In this case, the main window is not able to be automatically detected. To manually detect the window, you need to fill in the applications window caption box with what the title bar shows when the application loads. For example, Internet Explorer's window caption is: Windows Internet Explorer.

You can also manually set the icon shown on the console tab to the icon contained within an .ico or .exe

Removing a Tab

To remove a tab, just select the tab from the list of created tabs and click the X button on the toolbar. For your changes to take effect, you need to reset the Windows Home Server Console. Close out the console window, and reopen it. Before logging in again, click the options menu below the password box, and choose ‘Reset the Windows Home Server Console.’ After resetting the console, you may now log back into the console.

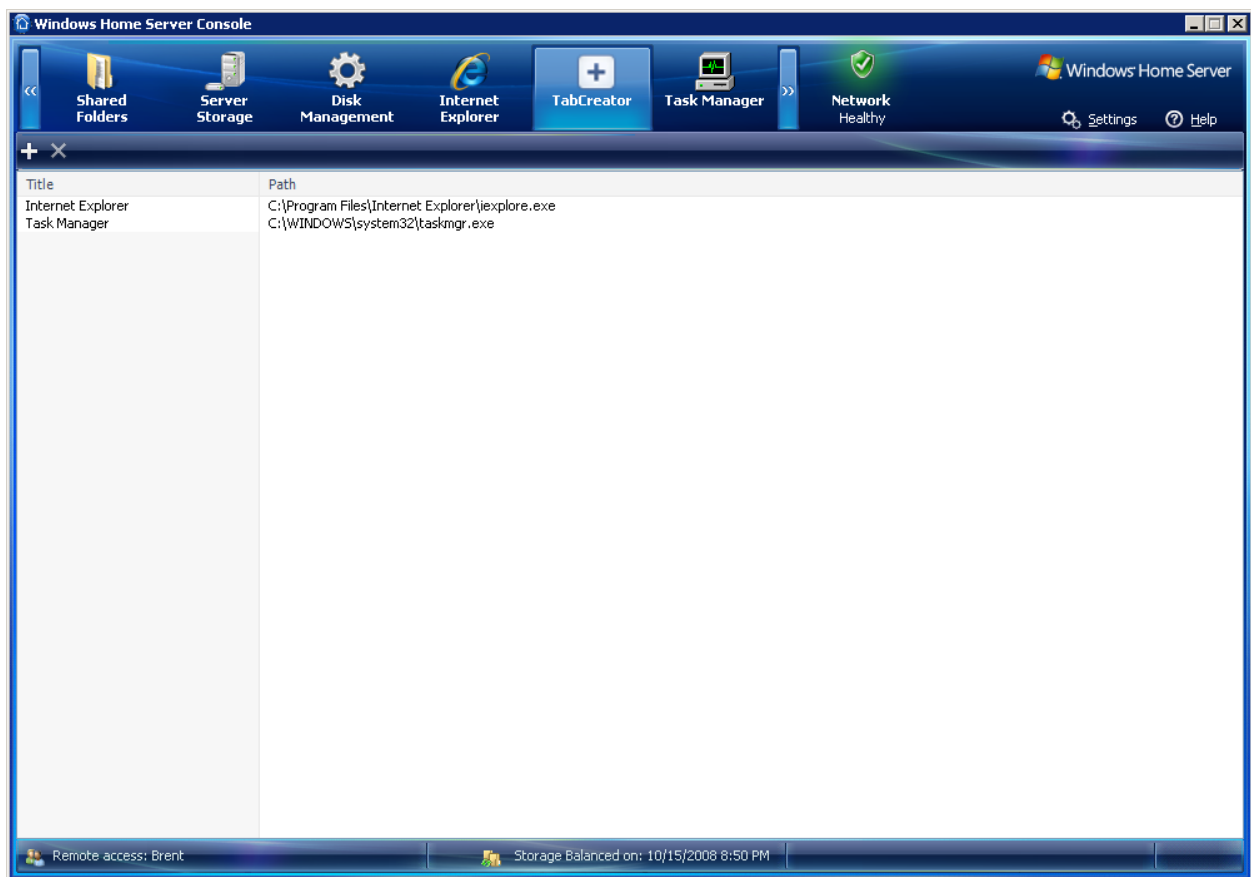


FIGURE 3

FAQs

- **Q:** Do normal images work in place of the tab icons?
A: You can get it working with images, but it requires a 48x48 px image. Or else it will be too big for the space available.

Support

For technical support, visit the [We Got Served Forums](#).