



# TV Manager 1.5



CompuGeek Software

This document provides instructions on how to use and install TV Manager.

# Contents

---

Introduction .....	3
Requirements .....	4
Server .....	5
Installation .....	5
Email Notifications .....	6
Client .....	7
Deployment .....	7
Usage .....	7
Opening Web Interface .....	7
Opening the Recorded TV Guide .....	8
Settings .....	9
Media Center .....	10
Web Interface .....	11
Playing Recordings .....	11
Local Network .....	11
Internet .....	11
Full Screen .....	12
Temporary Files .....	12
Sorting .....	12
Plugs .....	13
Class Diagram .....	14
Sample Plug .....	15
FAQs .....	16
Support .....	17

# Introduction

---

TV Manager is a Windows Home Server Add-in that moves your Media Center recordings to your server for storage and management. You can view your moved recordings from within Media Center as if it were sitting in that computer's Recorded TV folder.

You can also watch the recordings from the TV Manager Web Interface to non-MC PCs over your local and internet connection. New in v1.5 is the Recorded TV Guide, this allows computers without Media Center to easily view and play your Recorded TV.

TV Manager also includes Windows 7 support (including JumpLists), and full support for the new Recorded TV format that is replacing Dvr-Ms recordings.

Need to remove those annoying commercials? No problem! TV Manager v1.5 supports a commercial skipping method called ComSkip for Dvr-Ms and for Wtv recordings (Wtv support only for Windows 7).

# Requirements

---

- A Windows Home Server with or without Power Pack 3
- One or more of either: A PC with Media Center. (Windows 7, Windows Vista, Windows Media Center Edition)
- Windows Media Player 11/12 installed on client PCs
- Windows Home Server Connector software installed and configured on client PCs

# Server

---

The server side is split into three parts. The first part is the web interface; the second is the background service, and the third being the home server console tabs.

The web interface allows PCs without Media Center to play and get information about recordings. You can also manage your recordings from this page.

The background service monitors two things; it changes your Recorded TV share's permissions while watching for new recordings to send emails notifications.

The console tab lists all the recordings and allows fast-and-easy deployment of the client application. The console settings page lets you change the associated email address for each show as well as the server information the email is sent through.

## Installation

The Windows Home Server Add-in installation is fairly easy and doesn't require any configuration afterwards. To install the Windows Home Server Add-in follow the below instructions:

- 1) Copy TVManager.msi to [\\SERVER\Software\Add-Ins](#).
- 2) Open up the Windows Home Server Console.
- 3) Open the Settings dialog.
- 4) Switch to the Add-ins tab.
- 5) Click the Available tab.
- 6) Find TV Manager in the list of available add-ins.
- 7) Click the install button under TV Manager.
- 8) After it installs click OK.
- 9) Done.

## Email Notifications

Email notifications can be set per show to a specific email address. The email contains episode information such as the episode name, description, and duration; as well as ways to watch the new recording.

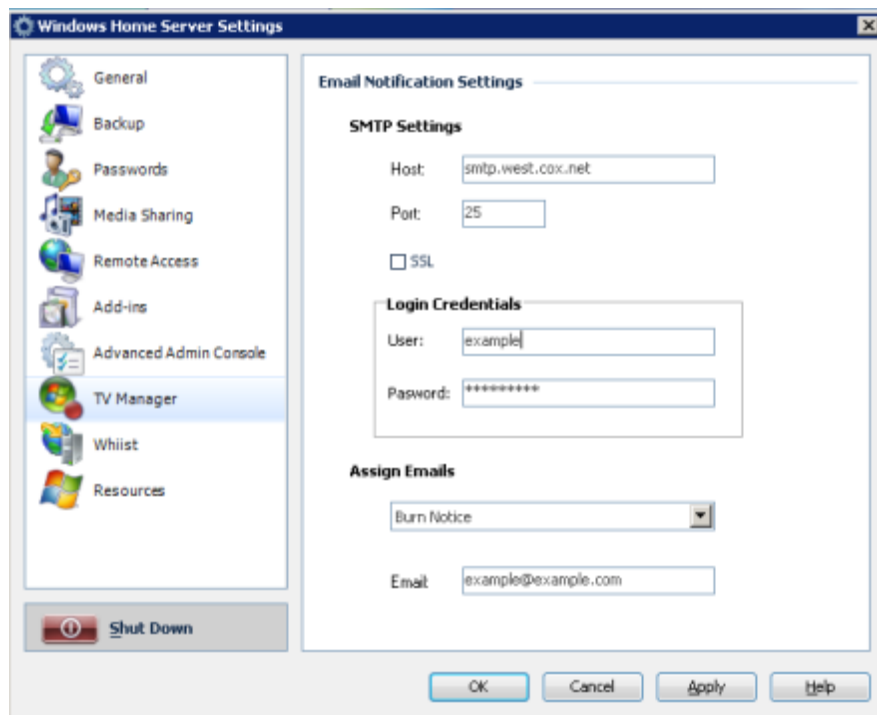


FIGURE 1

To assign a show to an email, navigate to the TV Manager Settings tab. Choose a show from the drop down and enter in the email address to assign to the show. [See Figure 1](#)

# Client

---

The TV Manager Client software must be installed on the Media Center PCs you wish to use TV Manager's features. The software is optional for the other PCs on your network.

## Deployment

Deploying the TV Manager Client to your PC can be done by following the steps below:

- 1) Open the TV Manager Web Interface: <https://server/tv>
- 2) Login using a Windows Home Server user account with remote access privileges
- 3) Click Deploy Client. (See Figure 2)
- 4) Run the installer downloaded.
- 5) Follow the installer's prompts.
- 6) When you click Finish, the client will automatically start.

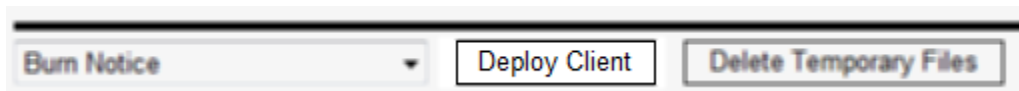


FIGURE 2

## Usage

This section covers how to use the TV Manager Client.

### Opening Web Interface

To quickly open the web interface, just double click the TV Manager icon in your system notification area.



FIGURE 3

## Opening the Recorded TV Guide

To quickly open the Recorded TV Guide (See Figure 5), just single click the TV Manager icon in your system notification area.

See Figure 3

If you are using Windows 7, all you have to do is single click the TV Manager icon in your taskbar.



FIGURE 4

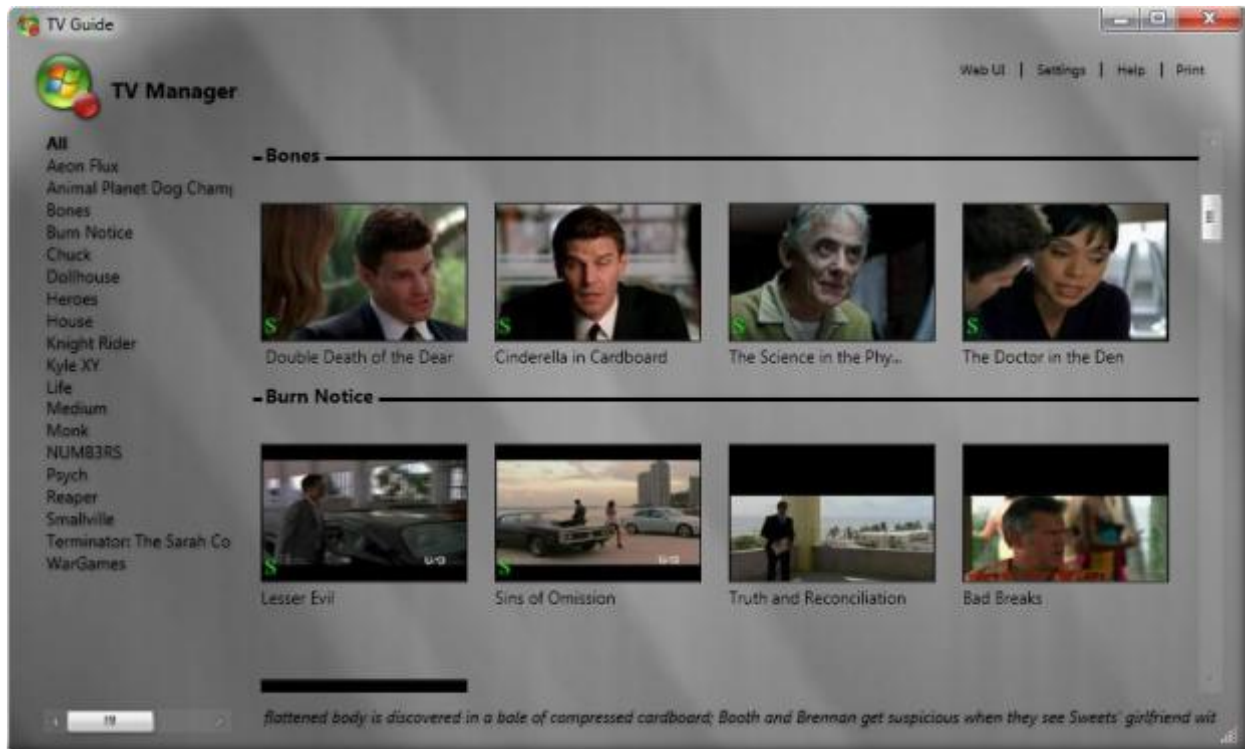


FIGURE 5

## Settings

To open the settings dialog, just right click the TV Manager icon (See Figure 3) and choose Settings.



FIGURE 6

### ***Disable Status Notifications***

To disable status notifications, just check “Don’t Show Status Notifications.”

[See Figure 6](#)

### ***Commercial Skipping***

To enable commercial removal in .Dvr-Ms recordings (and .Wtv recordings on Windows 7) check "Use ComSkip."

[See Figure 6](#)

### ***Move at a specified time of day***

If you want to set TV Manager to move your recordings as a specified time of day, just check "Move At". Then set the time using the drop down menus.

**Media Center**

To play a recording through media center, just play it as you normally would if it hadn't been moved to your Windows Home Server. You can delete recordings from Media Center; the changes will also apply to the web interface.

***Extender***

For Media Center Extenders to be able to see and play Recorded TV on your Windows Home Server, you need to enable the Guest account on your server. When you enable the Guest account using the Console, make sure you do not set a password for it.

# Web Interface

---

## Playing Recordings

To play a recording using the web interface, you need to use Internet Explorer. This is because the Windows Media Player control requires Internet Explorer to be used.



FIGURE 7

## Local Network

To play over your local network, select a series from the drop down. Next, just click the episode name from the list of episodes. You should be brought to a new page with Media Player embedded into it.

## Internet

To play over the internet, select a series from the drop down. Next, just click the episode name from the list of episodes. If you have email notifications set-up for that series, your recording should be ready for streaming over the internet. If not, you will be brought to a page telling you to try again in a few minutes. After a few minutes, click the Refresh button to see if it is ready now.

### **Full Screen**

To view the video in full screen mode, once the video is playing, right click it. Choose Zoom => Full Screen.

### **Temporary Files**

Temporary files are used when email notifications are turned on or when a user watches a recording over the internet. To delete the temporary files and free hard drive space, just click the “Delete Temporary Files” button.

### **Sorting**

To sort recordings by a certain field (e.g.: date), just click the field name to toggle ascended or descended sorting.

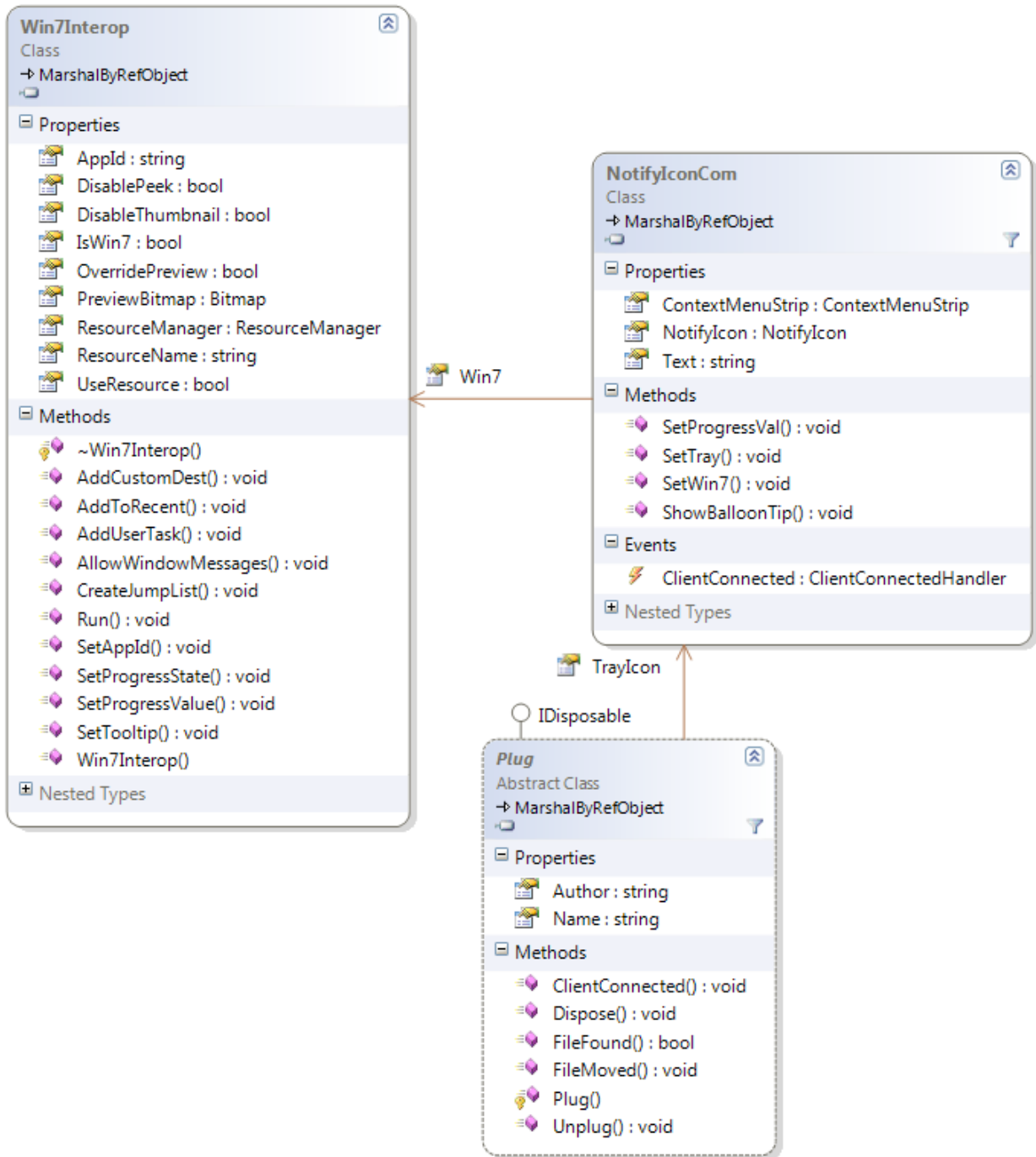
## Plugs

---

Think TV Manager is missing a feature? Build it! TV Manager now comes with a plug-in system (plugs). To build a plug, all you need to know is Visual Basic.NET, C#.NET, or Visual C++. TV Manager checks for dll files in the "C:\Program Files\CompuGeek Software\TV Manager\plugs" directory on the client. It then searches the dll for a class that inherits `Api.Current.Plug` from the `TVManager_Api` library.

For more information, navigate to `Api.Current.Plug` in the object browser (using Visual Studio) and check out the summary for each property and method. The available classes, properties, and methods are shown Figure 8.

Class Diagram



**Sample Plug**

```

using System.Windows.Forms;
using Api.Current;
using Api.FS;
namespace EvisPlug
{
    public class Elvis : Plug
    {
        private const string cAuthor = "Elvis";
        private const string cName = "Heaven";

        public Elvis(Watcher fw) : base(fw)
        {
            Name = cName;
            Author = cAuthor;
            Welcome();
        }

        public override bool FileFound(string fileName)
        {
            TrayIcon.ShowBalloonTip(2000, "File Found", string.Format("{0}
says, your recording has been found.", Author), ToolTipIcon.Info);
            return true;
        }

        public override void FileMoved(string fileName)
        {
            TrayIcon.ShowBalloonTip(2000, "File Moved", string.Format("{0}
says, your recording has been moved.", Author), ToolTipIcon.Info);
            base.FileMoved(fileName);
        }

        public override void ClientConnected()
        {
            Welcome();
            base.ClientConnected();
        }

        private void Welcome()
        {
            TrayIcon.ShowBalloonTip(2000, string.Format("{0} has been
freed.", Author), string.Format("{0}'s gate has been unlocked.", Name),
ToolTipIcon.Info);
        }

        public override void Unplug()
        {
            TrayIcon.ShowBalloonTip(2000, "God caught up.",
string.Format("{0} has left the building. Thank ya, thank ya very much.",
Author), ToolTipIcon.Info);
            base.Unplug();
        }
    }
}

```

## FAQs

---

- **Q:** Does this work with Lifextender?

**A:** There is a trick to get it working with Lifextender. Open up command prompt on the machine you wish to use Lifextender to remove the commercials from recordings.

Copy in: `mklink /D "C:\Users\Public\Windows Home Server" "\\SERVER\Recorded TV"`

Press enter, and close the command prompt window. Now, open up the Lifextender options dialog. Change the TV Recording path to: `C:\Users\Public\Windows Home Server`

Click the More Settings tab. Change the Output directory (click the ellipses), navigate to `Network => Server => Recorded TV`.

Click Save and it should work with TV Manager.

# Support

---

For technical support, visit the [TV Manager sub-forum](#) on the We Got Served Forums or email [support@brentf.com](mailto:support@brentf.com).