

TV Manager 1.0.1



CompuGeek Software

This document provides instructions on how to use and install TV Manager.

Contents

Introduction.....	3
Requirements	4
Server	5
Installation.....	5
Email Notifications	6
Client.....	7
Deployment.....	7
Usage.....	7
Opening Web Interface.....	7
Settings	8
Media Center	8
Web Interface.....	9
Playing Recordings	9
Local Network.....	9
Internet.....	9
Full Screen.....	10
Temporary Files	10
FAQs.....	11
Support.....	12

Introduction

TV Manager is a Windows Home Server Add-in that moves your Media Center recordings to your server for storage and management. You can view your moved recordings from within Media Center as if it were sitting in that computer's Recorded TV folder. You can also watch the recordings from the TV Manager Web Interface to non-MC PCs over your local and internet connection.

New in v1.0.1 is the ability to have TV Manager notify selected email addresses when a new recording for select shows are available for viewing. The recording is then quickly readied in the case you wish to view the recording out of the house using the new web interface.

Requirements

- A Windows Home Server with or without Power Pack 1
- One or more Vista Media Center or Media Center 2005 PCs with TV Tuner
- Windows Media Player 11 installed on client PCs
- Windows Home Server Connector software installed and configured on client PCs

Server

The server side is split into three parts. The first part is the web interface; the second is the background service, and the third being the console settings tab.

The web interface allows PCs without Media Center to play and get information about recordings. You can also manage your recordings from this page.

The background service monitors two things, your Recorded TV share's permissions, and watches for new recordings to send emails about.

The console settings page lets you change the associated email address for each show as well as the server information the email is sent through.

Installation

The Windows Home Server Add-in installation is fairly easy and doesn't require any configuration afterwards. To install the Windows Home Server Add-in follow the below instructions:

- 1) Copy TVManager.msi to [\\SERVER\Software\Add-Ins](#).
- 2) Open up the Windows Home Server Console.
- 3) Open the Settings dialog.
- 4) Switch to the Add-ins tab.
- 5) Click the Available tab.
- 6) Find TV Manager in the list of available add-ins.
- 7) Click the install button under TV Manager.
- 8) After it installs click OK.
- 9) Done.

Email Notifications

Email notifications can be set per show to a specific email address. The email contains episode information such as the episode name, description, and duration; as well as ways to watch the new recording.

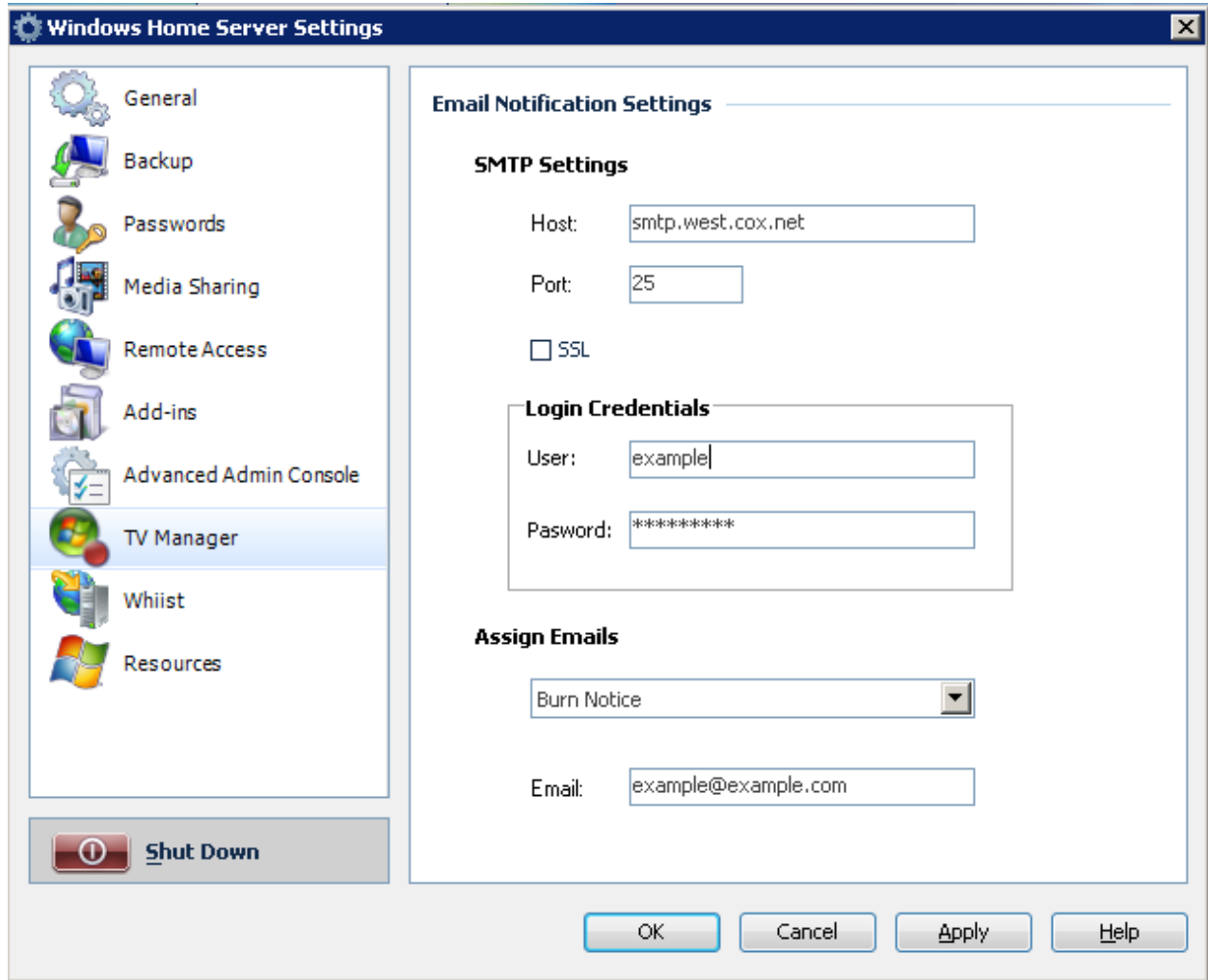


FIGURE 1

To assign a show to an email, navigate to the TV Manager settings tab. Choose a show from the drop down and enter in the email address to assign to the show. [See Figure 1](#)

Client

The TV Manager Client software must be installed on the Media Center PCs you wish to use TV Manager's features. The software is optional for the other PCs on your network.

Deployment

Deploying the TV Manager Client to your PC can be done by following the steps below:

- 1) Open the TV Manager Web Interface: <https://server/tv>
- 2) Login using a Windows Home Server user account with remote access privileges
- 3) Click Deploy Client. [See Figure 2](#)
- 4) Run the installer downloaded.
- 5) Follow the installer's prompts.
- 6) When you click Finish, the client will automatically start.

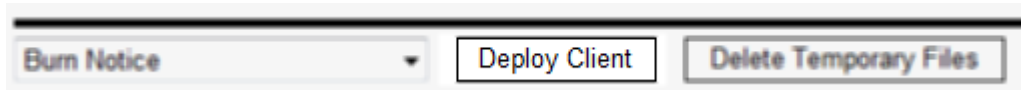


FIGURE 2

Usage

This section covers how to use the TV Manager Client.

Opening Web Interface

To quickly open the web interface, just double click the TV Manager icon in your system notification area. [See Figure 3](#)



FIGURE 3

Settings

To open the settings dialog, just right click the TV Manager icon (See Figure 3) and choose Settings.

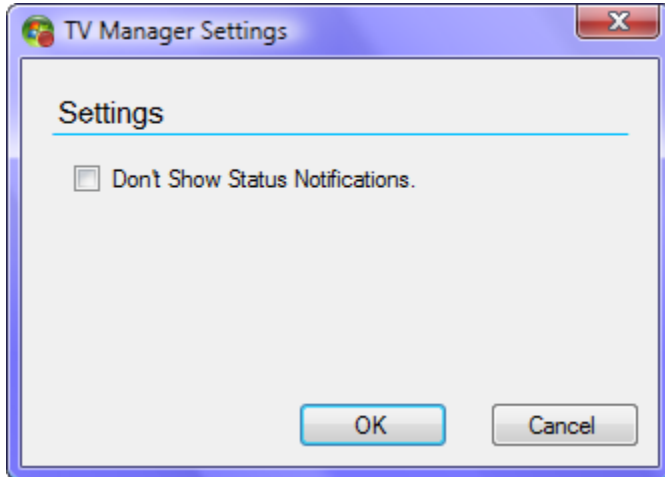


FIGURE 4

Disable Status Notifications

To disable status notifications, just check “Don’t Show Status Notifications.” See Figure 4

Media Center

To play a recording through media center, just play it as you normally would if it hadn’t been moved to your Windows Home Server. You can delete recordings from Media Center, the changes will also apply to the web interface.

Extender

For Media Center Extenders to be able to see and play Recorded TV on your Windows Home Server, you need to enable the Guest account on your server. When you enable the Guest account using the Console, make sure you do not set a password for it.

Web Interface

Playing Recordings

To play a recording using the web interface, you need to use Internet Explorer. This is because the Windows Media Player control requires Internet Explorer to be used.



FIGURE 5

Local Network

To play over your local network, select a series from the drop down. Next, just click the episode name from the list of episodes. You should be brought to a new page with Media Player embedded into it.

Internet

To play over the internet, select a series from the drop down. Next, just click the episode name from the list of episodes. If you have email notifications set-up for that series, your recording should be ready for streaming over the internet. If not, you will be brought to a page telling you to try again in a few minutes. After a few minutes, click the Refresh button to see if it is ready now.

Full Screen

To view the video in full screen mode, once the video is playing, right click it. Choose Zoom => Full Screen.

Temporary Files

Temporary files are used when email notifications are turned on or when a user watches a recording over the internet. To delete the temporary files and free hard drive space, just click the “Delete Temporary Files” button.

FAQs

- **Q:** Does this work with Lifextender?

A: There is a trick to get it working with Lifextender. Open up command prompt on the machine you wish to use Lifextender to remove the commercials from recordings.

Copy in: `mklink /D "C:\Users\Public\Windows Home Server" "\\SERVER\Recorded TV"`

Press enter, and close the command prompt window. Now, open up the Lifextender options dialog. Change the TV Recording path to: `C:\Users\Public\Windows Home Server`

Click the More Settings tab. Change the Output directory (click the ellipses), navigate to Network => Server => Recorded TV.

Click Save and it should work with TV Manager.

- **Q:** What happened to the Console Tab from 1.0?

A: I replaced it with the web interface due to the fact that the Windows Home Server Console should only be used for changing settings and managing the server. Viewing, playing, and deleting recordings doesn't fit the bill.

Support

For technical support, visit the [TV Manager sub-forum](#) on the We Got Served Forums.